

ACCOMMODATIONS SYMBOL LEGEND

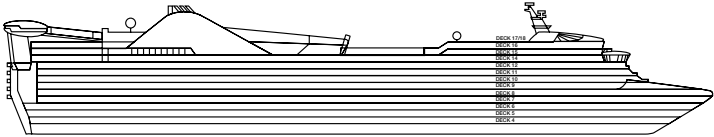
- \* Twin Beds do not convert to a King Bed
  - King Bed does not convert to Twin Beds
  - ★ 2 Twin Beds (convert to King) and Single Sofa Bed
  - 2 Twin Beds (convert to King) and 1 Upper Pullman
  - ✱ 2 Twin Beds (convert to King) and 1 Upper Pullman (Beds do not convert to King when Pullman in use)
  - 2 Twin Beds (convert to King), Single Sofa Bed and 1 Upper Pullman
  - † 2 Twin Beds (convert to King) and Double Sofa Bed
  - 2 Twin Beds (convert to King) and 2 Upper Pullmans
- = 2 Twin Beds (convert to King), Single Sofa Bed with Convertible Bunk
- ↔ King Bed (does not convert to Twin Beds) and Double Sofa Bed
- ✳ 2 Twin Beds (convert to King) and 2 Upper Pullmans (Beds do not convert to King when Pullmans in use)
- ◁ Connecting staterooms (ideal for families and groups of friends)
- 🚭 All accommodations are non-smoking.
- Stateroom features and layouts may vary. Deck plan is subject to change.

Accessible staterooms are available for guests with disabilities. For details, please contact: **For US guests:** Call Guest Access Services at 1-800-438-6744 ext. 70025, or visit <https://www.carnival.com/about-carnival/special-needs>

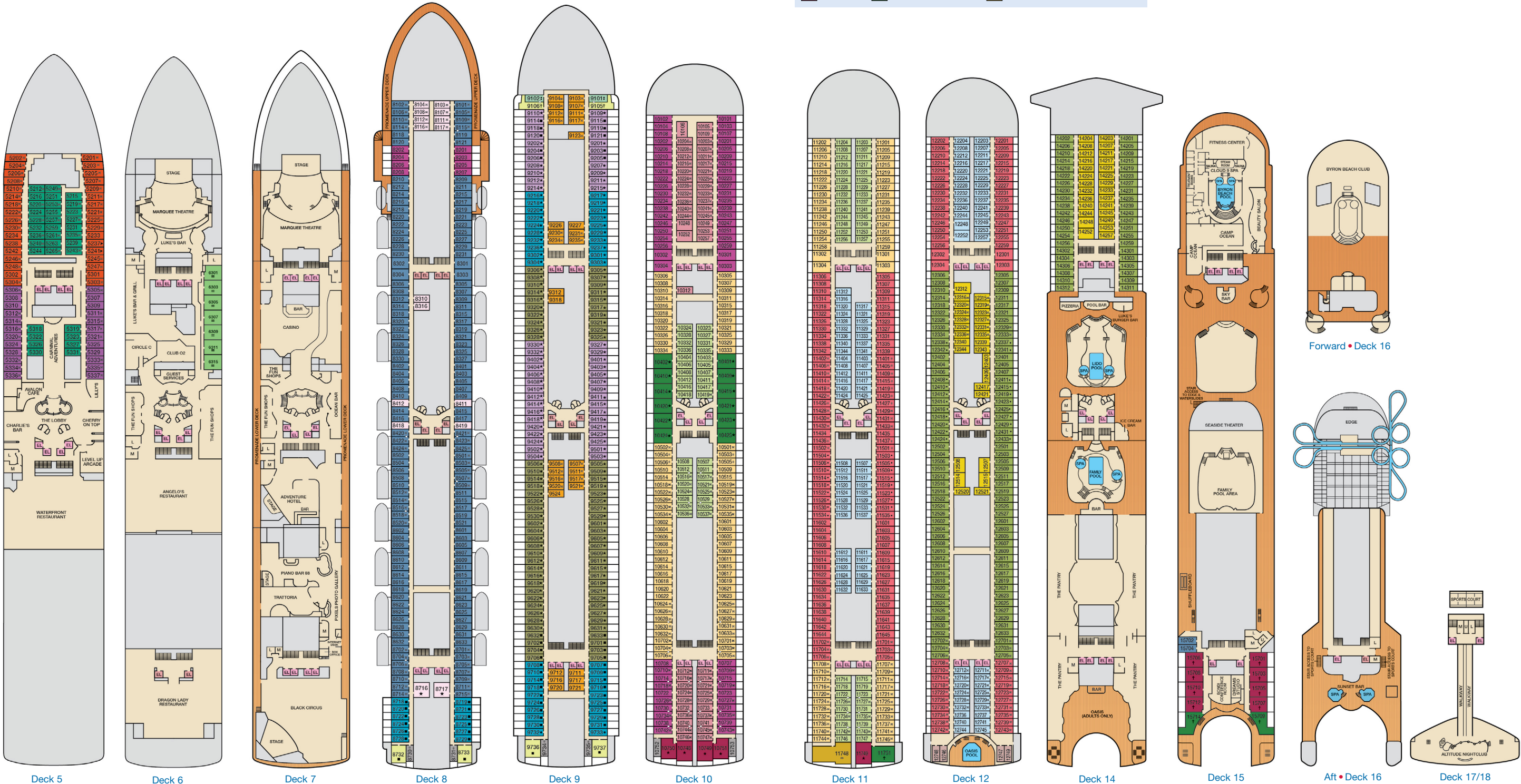
**For Australia and New Zealand guests:** Call the Carnival Reservations Department, Guest Services: Australia 13 31 94; New Zealand 0800 442 095.

CATEGORIES

- PT** Porthole
- 4A** **4B** **4C** **4D** **4E** **4F** **4G** **4H** Interior
- 5A** Ocean View (obstructed views)
- 6A** **6B** Ocean View
- 8A** **8B** **8C** **8D** Balcony
- 8M** Aft-View Extended Balcony
- OS** **OT** Ocean Suite
- Byron Beach Accommodations: **BV** Ocean View Suite **BY** Ocean Suite **VB** Vista Suite
- GB** Grand Suite **EB** Extended Balcony Suite **SB** Presidential Suite



Gross Tonnage: 108,865 Length: 951 Feet Beam: 118 Feet  
Cruising Speed: 20 Knots Guest Capacity: 2,636 (Double Occupancy)  
Total Staff: 1,100 Registry: The Bahamas





CARNIVAL ADVENTURE™

ACCOMMODATIONS SYMBOL LEGEND

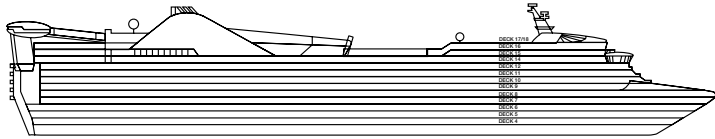
- \* Twin Beds do not convert to a King Bed
- King Bed does not convert to Twin Beds
- ★ 2 Twin Beds (convert to King) and Single Sofa Bed
- 2 Twin Beds (convert to King) and 1 Upper Pullman
- ✱ 2 Twin Beds (convert to King) and 1 Upper Pullman (Beds do not convert to King when Pullmans in use)
- 2 Twin Beds (convert to King), Single Sofa Bed and 1 Upper Pullman
- † 2 Twin Beds (convert to King) and Double Sofa Bed
- 2 Twin Beds (convert to King) and 2 Upper Pullmans
- = 2 Twin Beds (convert to King), Single Sofa Bed with Convertible Bunk
- ↔ King Bed (does not convert to Twin Beds) and Double Sofa Bed
- ✳ 2 Twin Beds (convert to King) and 2 Upper Pullmans (Beds do not convert to King when Pullmans in use)
- ◁ Connecting staterooms (ideal for families and groups of friends)
- 🚭 All accommodations are non-smoking.

- Accessible Routes including Ramps
- Restrooms, Elevators, Lifts and other Accessible Areas
- Fully Accessible Staterooms (FAC)
- Fully Accessible Staterooms - Single Side Approach (FAC-SSA)
- Ambulatory Accessible Staterooms (AAC)

Stateroom features and layouts may vary. Deck plans subject to change.

DECK PLANS

For specific ship accessibility features, please contact:  
For US guests: Call Guest Access Services at 1-800-438-6744 ext. 70025, or visit <https://www.carnival.com/about-carnival/special-needs>  
For Australia and New Zealand guests: Call the Carnival Reservations Department, Guest Services: Australia 13 31 94; New Zealand 0800 442 095.



Gross Tonnage: 108,865 Length: 951 Feet Beam: 118 Feet  
Cruising Speed: 20 Knots Guest Capacity: 2,636 (Double Occupancy)  
Total Staff: 1,100 Registry: The Bahamas

